

RAP 80 F901: Snap-action relay

Variable relay used either to put a system under pressure or to vent it in accordance with a pneumatic signal.

Housing of thermoplastic; front plate with setpoint adjuster, embossed with connection diagram and description of operation. Control action can be changed over (factory setting: A). Suitable for mounting on walls or rails (as per C EN 50024, C EN 50022; see *Accessories*). Compressed-air connection Rp 1/8 female thread.



T03048



Y03182

Type	Description	Air output	Air consumption	Weight kg
RAP 80 F901	snap-action relay	400 l _n /h	6 l _n /h	0.15
Supply pressure ¹⁾	1.3 bar ± 0,1	Permissible ambient temp.		0...55 °C
Input pressures	0...1.4 bar	Connection diagram		A02894
Output pressure	0...1.4 bar	Dimension drawing		M297107
Setpoint X _S	0...100%	Fitting instructions		MV 3281
Switching difference	0.04 bar (fixed)			

Accessories

0296936 000* Fixing bracket for rail EN 50022 35 × 7.5 and 35 × 15

^{*)} Dimension drawing or wiring diagram are available under the same number

¹⁾ See Section 60 on regulations concerning the quality of supply air, especially at low ambient temperatures.

Operation

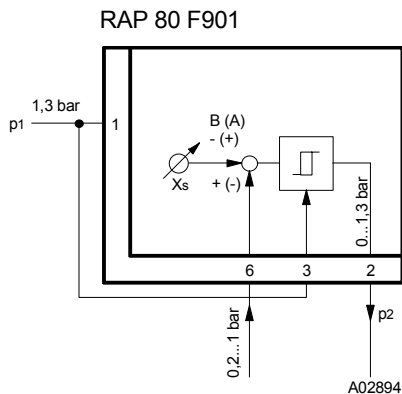
Control action A (factory setting)

If the pressure at connection no. 6 is higher than the setpoint, then the pressure is transmitted via connection no. 3. If it is lower, then the output pressure at connection no. 2 is vented.

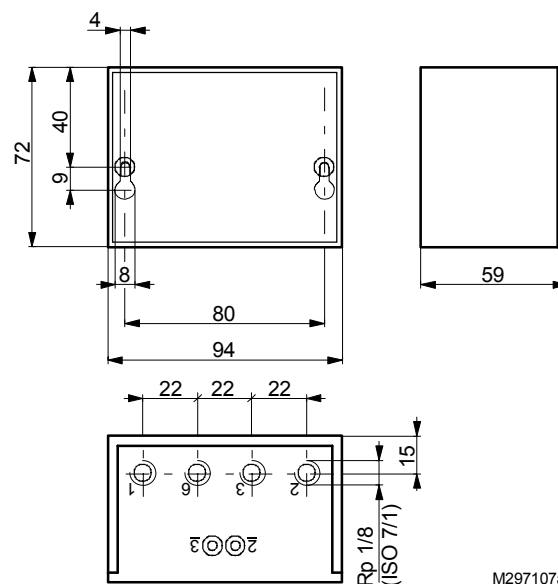
Control action B (change-over option)

If the pressure at connection no. 6 is lower than the setpoint, then the pressure is transmitted via connection no. 3. If it is higher, then the output pressure at connection no. 2 is vented.

Connection diagrams



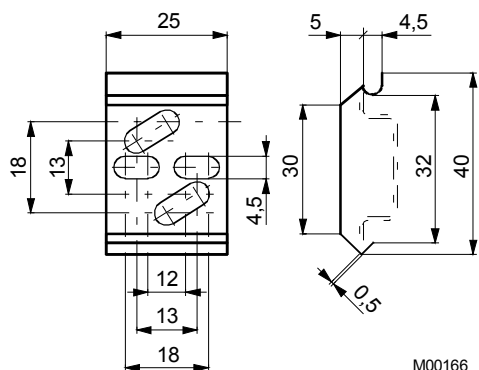
Dimension drawing



M297107a

Accessories

296936

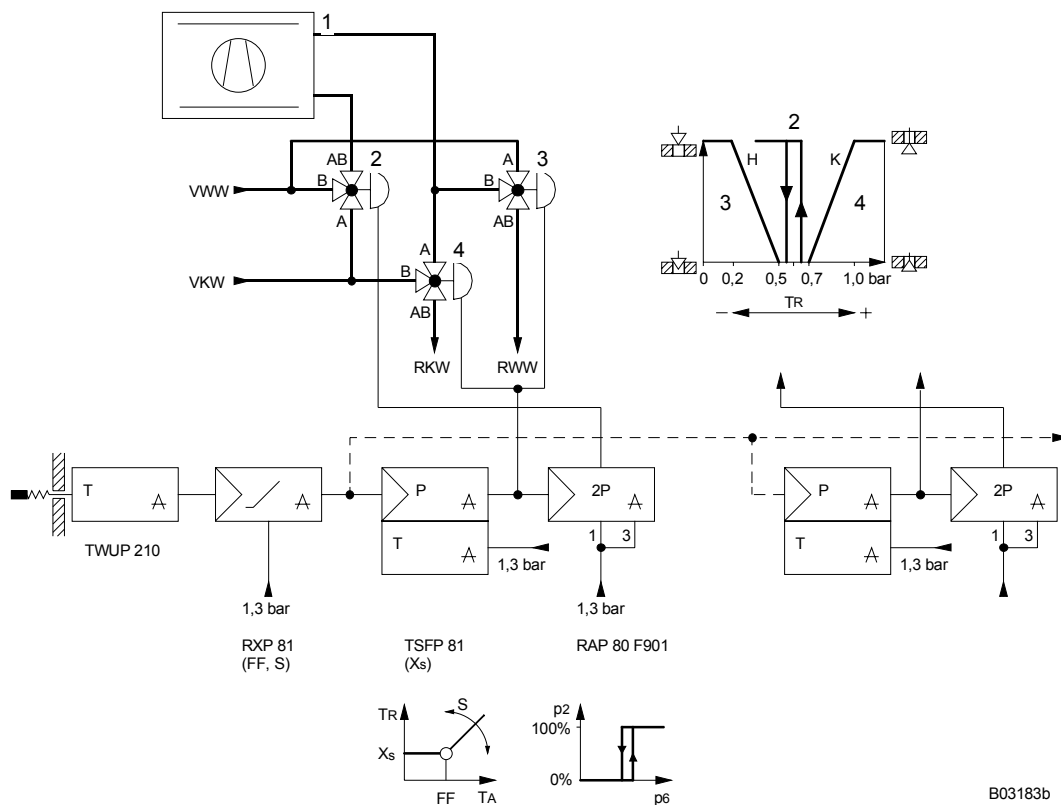


M00166

Example of use

Pneumatic individual-room temperature control: continuous control of room temperature in accordance with the outside temperature (fixed-value + schedule control).

Application: ventilator and jet-convector plant with common heat exchanger; four-pipe system.



B03183b

1	Induction device	H	=	heating	
2	Pneumatic three-way unit valve BH 18 P., B-AB normally open; full range 0.3 – 0.9 bar (change-over valve)	K	=	cooling	
		VWW	flow	}	warm water
		RWW	return		
3	Pneumatic three-way unit valve BH 11 P., B-AB normally open; partial ranges 0.2 – 0.5 bar	VKW	flow	}	cold water
		RKW	return		
		S	=	slope, setpoint shift	
4	Pneumatic three-way unit valve BK 15 P., A-AB normally closed; partial ranges 0.7 – 1.0 bar	FF	=	shift starting point, setpoint of scheduling relay	
		X _S	=	setpoint	
		T _A	=	outside temperature	
		T _R	=	room temperature	