

## XGP 2L: Heavy-duty, pneumatic control-pressure adjuster

For continuous remote operation of valves, or for remote adjustment by hand (when the capacity connected is high), or for minimum/maximum limitation of control pressures. Suitable for use where several adjustments are required throughout the day. Conforms to the regulations on pressure equipment (97/23/EG Art. 3.3).

Housing of thermoplastic; non-bleed-off control element; adjuster knob with exchangeable scales and two stops for limiting the setting range or locking the setting. Compressed-air connection: push-on connector for soft plastic tubing (internal  $\varnothing$  4 mm). Bleed-off restrictor  $\varnothing$  0.2 mm in the M4 measuring connection. Suitable for mounting into panels, onto walls or onto rails (C-EN 50024 or EN 50022 [see *Accessories*]).



T03215

Type	Setting range <sup>1)</sup> bar	Air capacity $I_n/h$	Weight kg
<b>XGP 2L F001</b>	0...1.2	400	0.09
Supply pressure <sup>2)</sup>	1.3 $\pm$ 0.1 bar	Permissible ambient temp. 0...55 °C	0...55 °C
Air consumption <sup>3)</sup>	7 $I_n/h$		
Output pressure	0...1.2 bar		
		Connection diagram Dimension drawing Fitting instructions	<a href="#">A03466</a> <a href="#">M297370</a> <a href="#">MV 7321</a>

### Accessories

- 0296936 000\*** Bracket for EN 50022, 35 × 7,5 and 35 × 15 rail
- 0296937 000\*** Bracket for C EN 50024-C20 rail and for wall mounting
- 0296218 000\*** Buckle-proof connector-adaptor for push-on installation
- 0296990 000\*** Buckle-proof connector-adaptor for screw-type installation; MV 7322

<sup>\*)</sup> Dimension drawing or wiring diagram are available under the same number

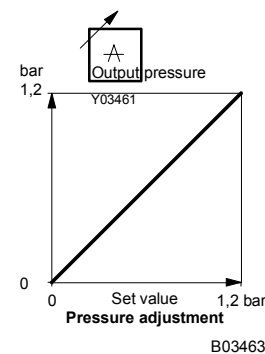
- 1) Scale: 0...1.2 bar, 'tail' increasing in thickness. Rear scale: 0...1.2 bar, 'tail' decreasing. Inscrutable scale (0...100%) is included underneath the normal scale.
- 2) See Section 60 on regulations concerning the quality of supply air, especially at low ambient temperature.
- 3) 40  $I_n/h$  when measuring connection is open (provides greater response sensitivity).

### Operation

The transmitter's functions can be split up as follows:-

#### Pressure adjustment

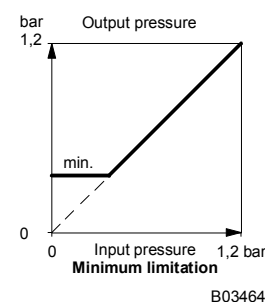
The output pressure increases when the adjuster knob is turned in a clockwise direction. If greater response sensitivity is required, the measuring connection (M4 sealing screw) must be loosened by one or two turns.



B03463

#### Minimum limitation

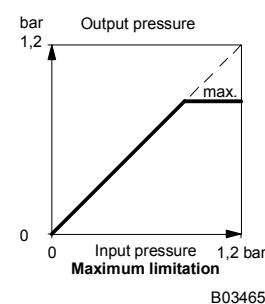
The minimum value increases when the adjuster knob is turned in a clockwise direction. The setting of the minimum value is protected by an in-built diode. The M4 sealing screw is closed for both bleed-off and non-bleed-off systems.



B03464

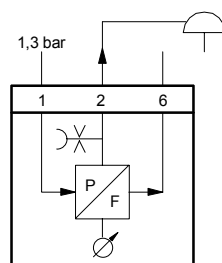
#### Maximum limitation

The maximum value increases when the adjuster knob is turned in a clockwise direction. The M4 sealing screw is closed for bleed-off systems; for non-bleed-off systems, the M4 sealing screw must be loosened by one or two turns.



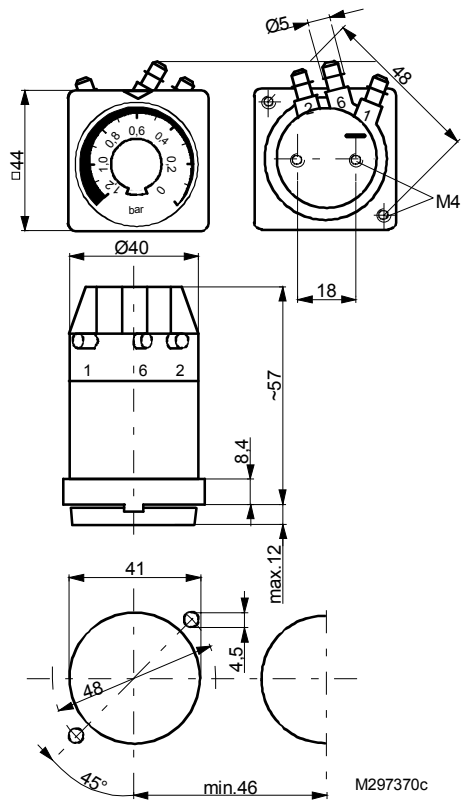
B03465

### Connection diagram



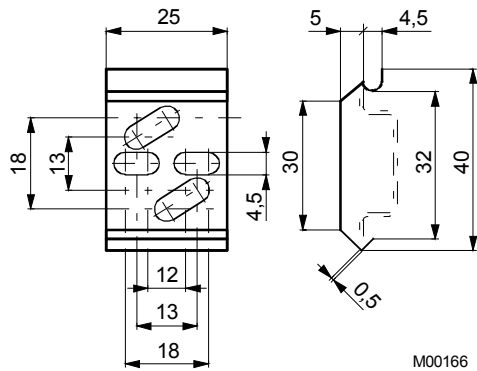
A03466

Dimension drawing

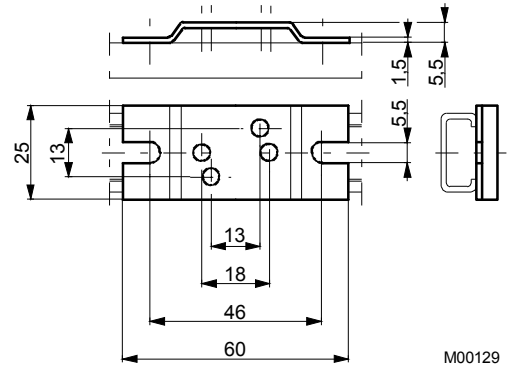


Accessories

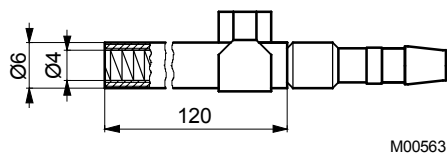
296936



296937



296218



296990

