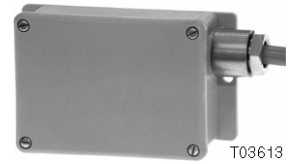


XAP: Position monitor/indicator

Used as an auxiliary unit for the AK41 - 43 P pneumatic actuators and AV43 - 45 valve drives for positional feedback during monitoring tasks.

Housing of glass-fibre-reinforced, self-extinguishing plastic. Fitted directly onto the drive using the necessary assembly material (accessory). Connecting cable is one metre long.



Type	Description	Output signal	Weight kg
XAP 1 F001	aux.-contact unit	2 contacts: open/closed	0.3
XAP 2 F001	potentiometer unit	10 - 1800 Ω approx.	0.3

XAP 1:		XAP 2:	
Contact rating	10 (2) A, 250 V~	Pot resistance	2000 Ω
Switching pt. for 'extended'	~ 5% before end position	resistance when 'extended'	10...50 Ω
Switching pt. for 'retracted'	~ 5% before end position	resistance when 'retracted'	1.5...1.8 kΩ
Switching difference	2.5% of stroke	Resolution	2 Ω
Connecting cable	4 × 1 mm ²	Max. load	4 W, 42 V
		Connecting cable	3 × 0.5 mm ²

Perm. ambient temp.	-15 to 50 °C	Dimension drawing	M274957
Degree of protection	IP 54 (EN 60529)	Fitting instructions	
Connection diagram	XAP 1 A02446 XAP 2 A02445	XAP to AV43...45	MV 4151
		XAP to AK41...43	MV 4153



Y03241



Y03308

Accessories

..... Assembly material 1): see drive data sheet, Section 71

1) Max. equipment on drive: one positioner and one XAP

Operation

XAP 1

The contacts of terminal 3 - 4 switch over to 1 - 2 in accordance with the stroke (drive spindle either extended or retracted).

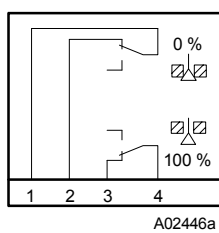
XAP 2

The position of the potentiometer's wiper arm (and, therefore, the resistance) changes in accordance with the stroke:-

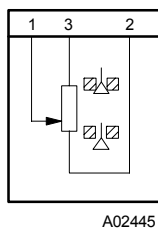
- Drive spindle extended
10 - 50 Ω (terminals 1 and 2) and 1.5 - 1.8 kΩ (terminals 1 and 3)
- Drive spindle retracted
1.5 - 1.8 kΩ (terminals 1 and 2) and 10 - 50 Ω (terminals 1 and 3)

Connection diagram

XAP 1



XAP 2



Dimension drawing

XAP1, 2

